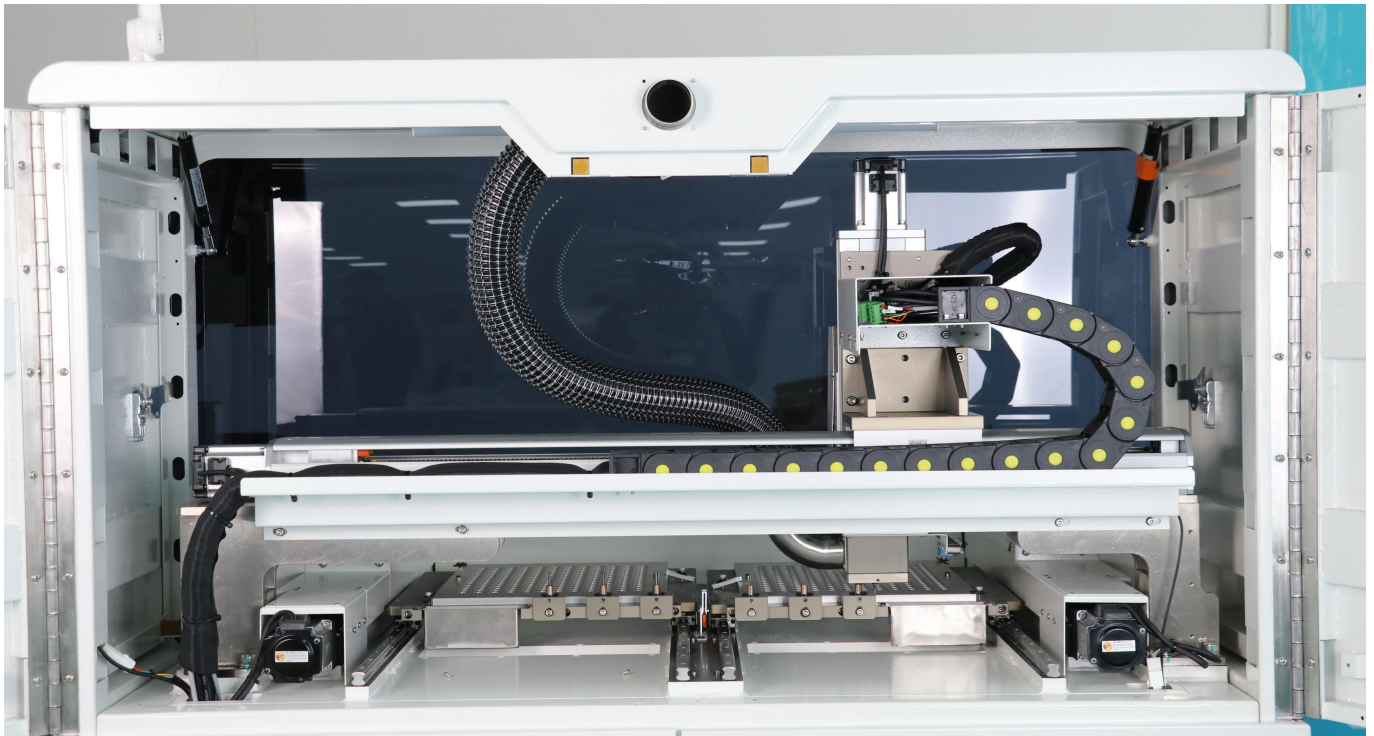


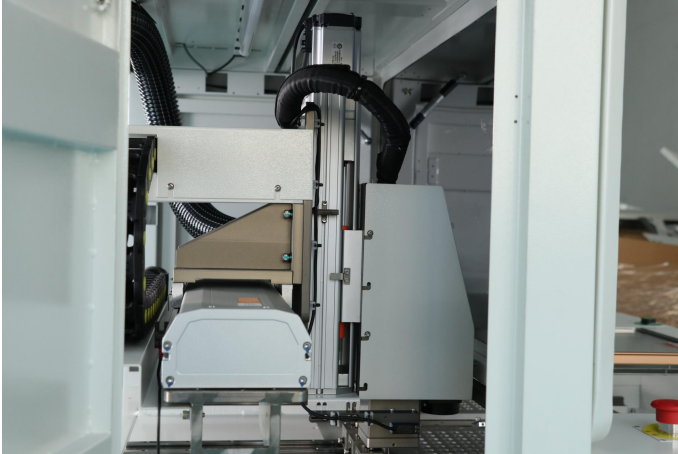
**I.C.T SMT Offline PCBA Router Machine****Introduce:**

I.C.T 5700 series is a high-precision pcba router, which is used in smart phones, smart wear, smart home, tablet computers, automotive electronics, medical devices, aerospace, military and other fields.

**Features:**

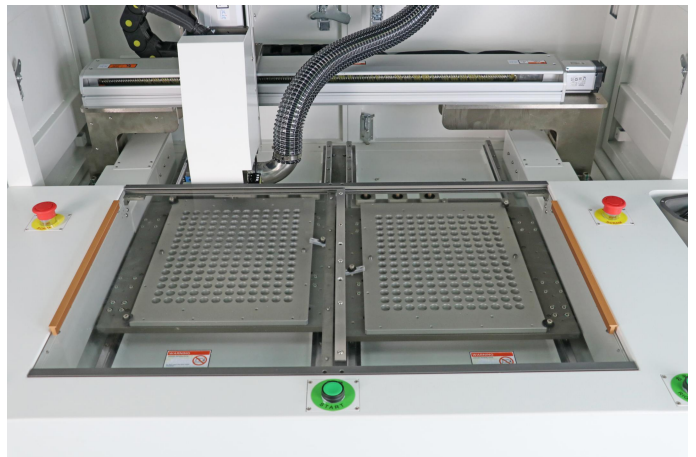
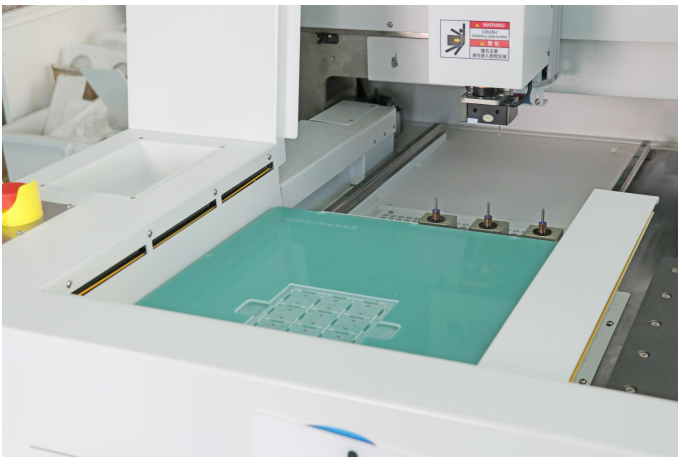
1. New CCD system,new vision system can correspond to all kinds of pcb mark.with visual counterpoint correction function;
2. The sensor can monitor the milling cutter state in real time, and effectively prevent the continuous operation of the cutter;
3. Using high speed spindle, cutting stress is greatly reduced, precision is high, inertia is small, and response is fast;
4. Ion air gun will remove static electricity on PCB surface and prevent dust from adsorbing on PCB;
5. Dual platform structure, can deal with different products at the same time, while the dual platform can be combined into a single platform, enhance the flexibility of equipment;
6. Adopt CNC special controller,high stability and strong anti-interference;
7. The separated vacuum dust collector adopts high efficiency motor with high suction and low noise;
8. Humanized operation system design, simple operation, flexible.

**Features 1:**



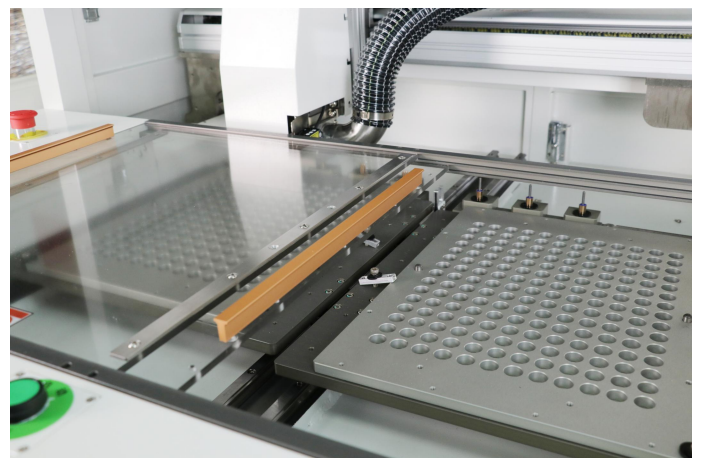
1. Imported Panasonic servo motors, paired with high-precision screw rods, ensure the accuracy of the motion system;
2. Stronger and thicker mechanical structure greatly improves the stability of machine operation.

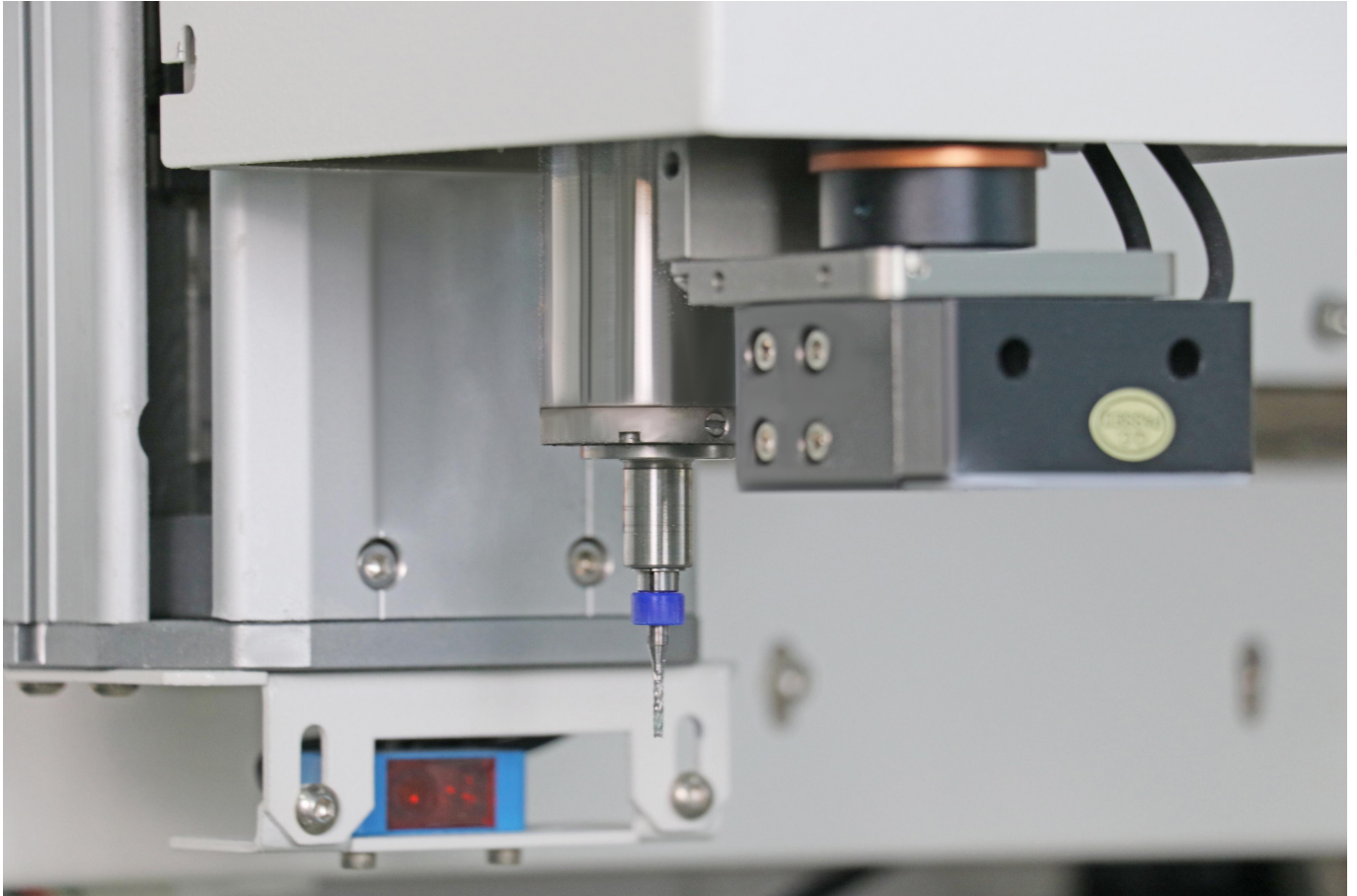
**Features 2:**



1. Start buttons on both sides. Only two simultaneous presses can start the machine, ensuring the safety of operation;
2. Two-way emergency stop button, multiple protections;
3. Standard safety protective cover, option safety light curtain.

**Features 3:**





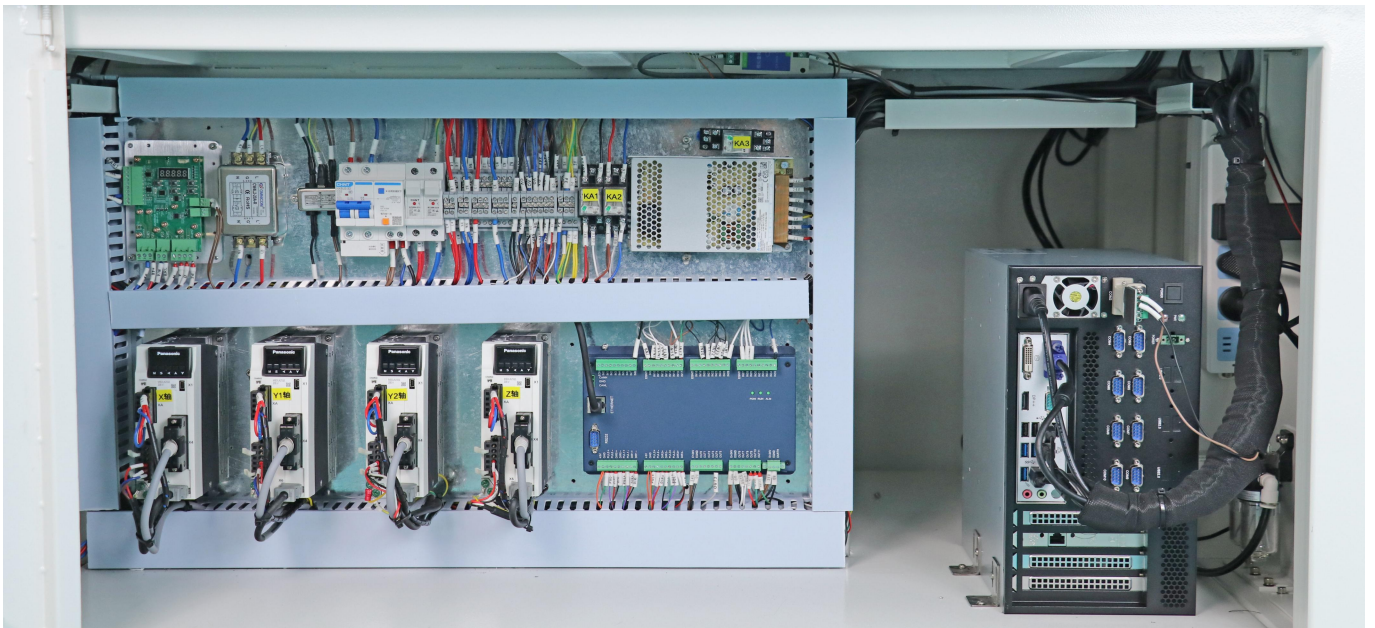
1. High-definition vision system, coaxial with the milling cutter, easy camera calibration;

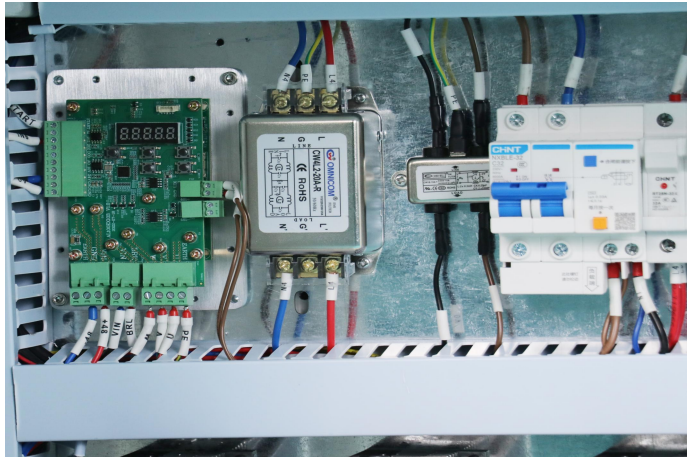
2. Standard tool breakage detection function, automatic alarm prompt if the milling cutter is broken or worn;

3. Option automatic tool changing function, it ensures that the machine can work continuously without stopping and achieve higher efficiency;

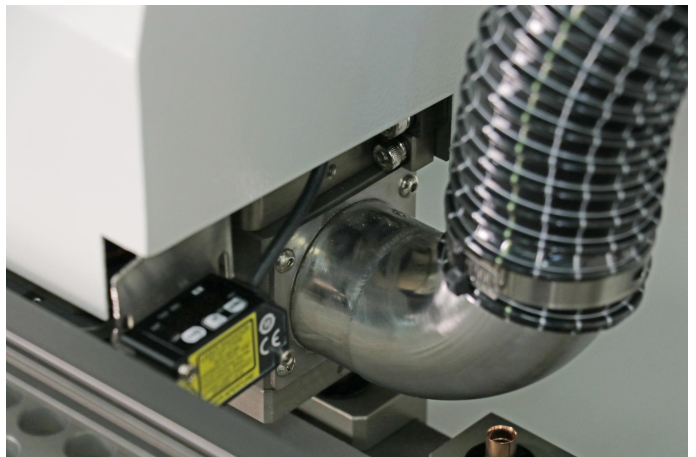
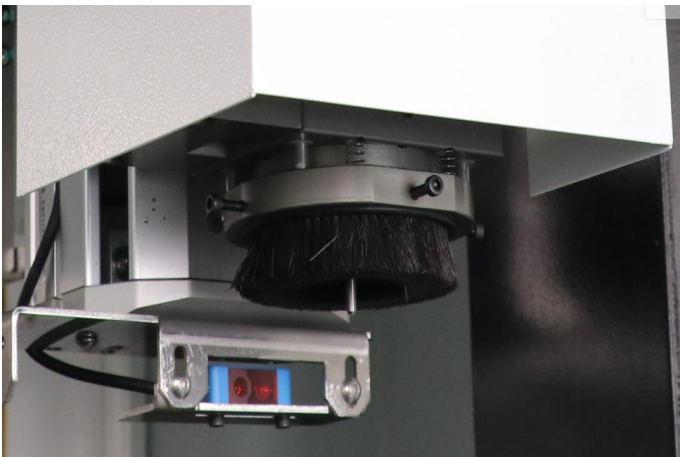
4. Dual platforms can produce independently without interfering with each other, and can also be merged into a large platform.

**Features 4:**





1. Industrial computer + PLC control, high control precision and good stability;
2. Production data can be traced and log report output can be generated;
3. Option MES function can output customer-customized production information and understand the equipment status in real time;
4. It has the functions of whole board scanning, CAD import, rapid path optimization, and offline programming.



1. Use a liftable brush to take into account the depth of the knife and reduce brush gaps;
2. The annular vortex static elimination and air separation mechanism effectively removes the static electricity generated during cutting.

**Configuration:**

| Parts                  | Brand     | Place of origin |
|------------------------|-----------|-----------------|
| X-axis servomoter      | Panasonic | Japan           |
| Y-axis servomoter      | Panasonic | Japan           |
| Z-axis servomoter      | Panasonic | Japan           |
| Main-axis/ spindle     | RSK       | China           |
| CCD                    | HIKVISION | China           |
| I/O Board              | I.C.T     | China           |
| Guide rail             | PMI/HIWIN | Taiwan          |
| Ball screw             | TBI       | Taiwan          |
| Power switching supply | Delta     | Taiwan          |

|         |       |       |
|---------|-------|-------|
| Sensor  | Omron | Japan |
| Bearing | NSK   | Japan |

**Specification :**

|                                    |  |                  |                  |
|------------------------------------|--|------------------|------------------|
| PCB Router                         | I.C.T-5700M                              | I.C.T-5700L      | I.C.T-5700LL     |
| PCB Size                           | 340*380mm                                | 340*450mm        | 450*600mm        |
| Platform Number                    | Double                                   | Double           | Double           |
| PCB thickness                      | 0.5~5.0mm                                |                  |                  |
| PCB support mode                   | Multifunctional fixture, special fixture |                  |                  |
| X,Y Cutting Speed                  | 0~100mm/s                                |                  |                  |
| Repeat Precision                   | ± 0.01mm                                 |                  |                  |
| X,Y,Z Driving Method               | AC Servo motor                           |                  |                  |
| X,Y,Z Control mode                 | CNC controller                           |                  |                  |
| Milling cutter size                | 0.8~3mm                                  |                  |                  |
| Operation and Data Storage         | PC System                                |                  |                  |
| Platform Drive                     | Cylinder(motor is option)                |                  |                  |
| Cut Precision                      | ± 0.05mm                                 |                  |                  |
| Rotational Speed of the Main Shaft | Max 8000rpm                              |                  |                  |
| Voltage                            | 220V,50/60HZ                             |                  |                  |
| Air Pressure Supply                | 4.5kg/cm <sup>2</sup>                    |                  |                  |
| Power Supply                       | 1.5kw                                    |                  |                  |
| Weight(with vacuum cleaner)        | 1000kg                                   |                  |                  |
| Dimension                          | 1290*1100*1437mm                         | 1290*1400*1437mm | 1380*1591*1441mm |
| Dust Collection Method             | Vacuum cleaning                          |                  |                  |
| Air volume of vacuum cleaner       | 28~35m <sup>3</sup> /min                 |                  |                  |
| Vacuum cleaner Dimension           | 640*785*1760mm                           |                  |                  |
| Voltage of the Dust Collector      | 380V,50/60HZ,3kw                         |                  |                  |

\* I.C.T keeps working on quality and performance,specifications and appearance may be updated without particular notice.

**Thanks for choosing I.C.T**

**I.C.T looks forward to win-win cooperation**

**Thank you.**