

Offline PCBA Cleaning Machine I.C.T-5600



Introduction:

I.C.T-5600 is an off-line, compact, energy-saving, environmental protection, batch cleaning, high-end PCBA cleaning machine. I.C.T-5600 can automatically complete the cleaning, rinsing, and drying process in the clean chamber by pushing one start key.

I.C.T-5600 PCBA cleaning machine can effectively clean the residuals on SMT/THT soldering PCBA, such as rosin flux, water-soluble flux, non-clean flux, solder paste, and other organic and inorganic contamination.

Mainly used in aviation, aerospace, medical, new energy, automotive electronics, and meters industries, especially suitable for small amount, and multiple types PCBA cleaning.

Features:

1. Through clean rosin flux, water-soluble flux, non-clean flux, solder paste and other organic and inorganic contamination.
2. 2-layers cleaning basket.
3. State of the process is visible through a large observation window.
4. Clean detergent heat system heat cleaning detergent to a certain temp, raise cleaning efficiency and reduce clean time.
5. Easy operation interface, quick setting clean parameters. Different passwords can be set.
6. Inner filter makes detergent used repeated. Real-time measure DI water resistivity and monitoring cleaning effect.
7. The remaining detergent in the pump and pipes are blown off by compressed air and flow back to cleaning tank. This function saves detergent up to 50%.
8. High standard cleanliness, ionic contamination completely meets the requirement of IIPC-610D I class.
9. Totally SUS304 structure, very firm and attractive.

Material:



Visible, lighting



Large space: 640*560*520mm, 2 layers
Cleaning room(Stainless steel 304)



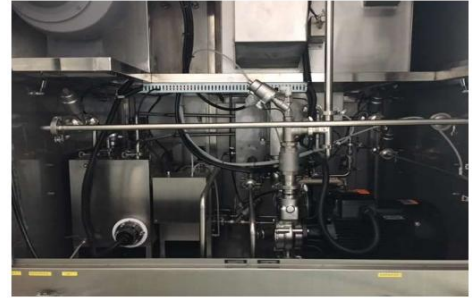
Auto move



Control Box
Mitsubishi, Schneider, CKD, Omron

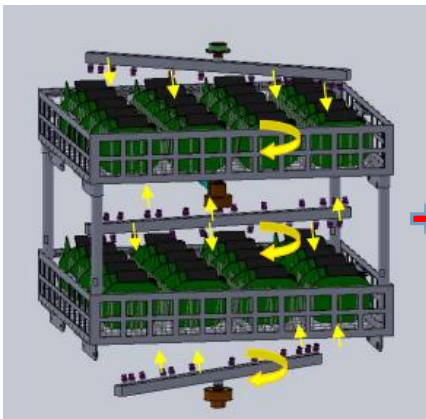


Industrial Pure Water Machine
Made by I.C.T

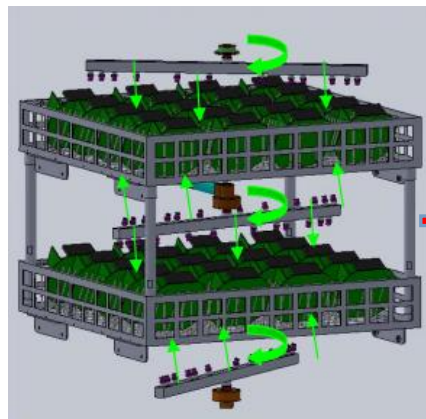


Pipe and Valve
Stainless steel 304

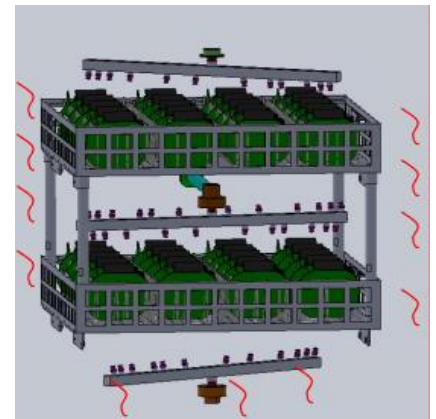
Cleaning process:



Cleaning

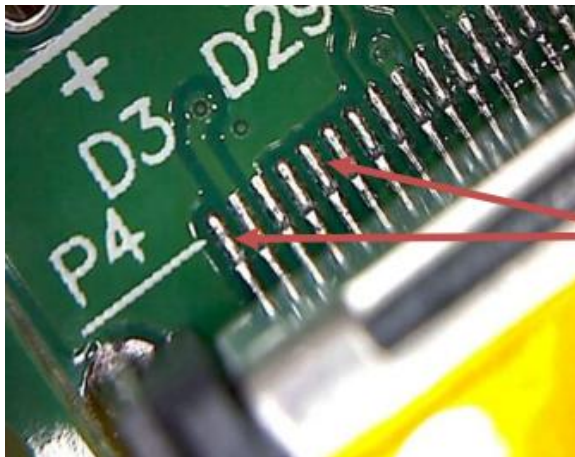


Rinsing



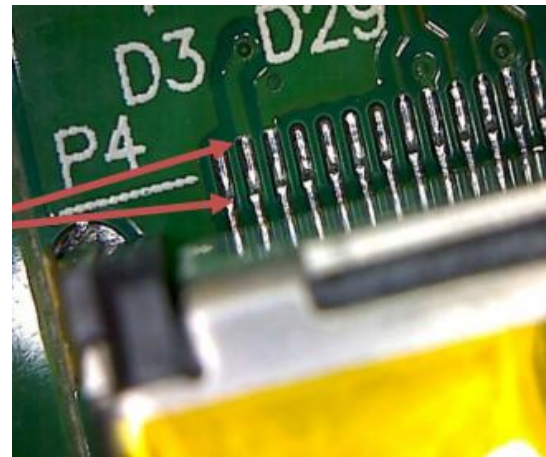
Drying

Effect:



Before cleaning

vs



After cleaning

Cleaning Report:

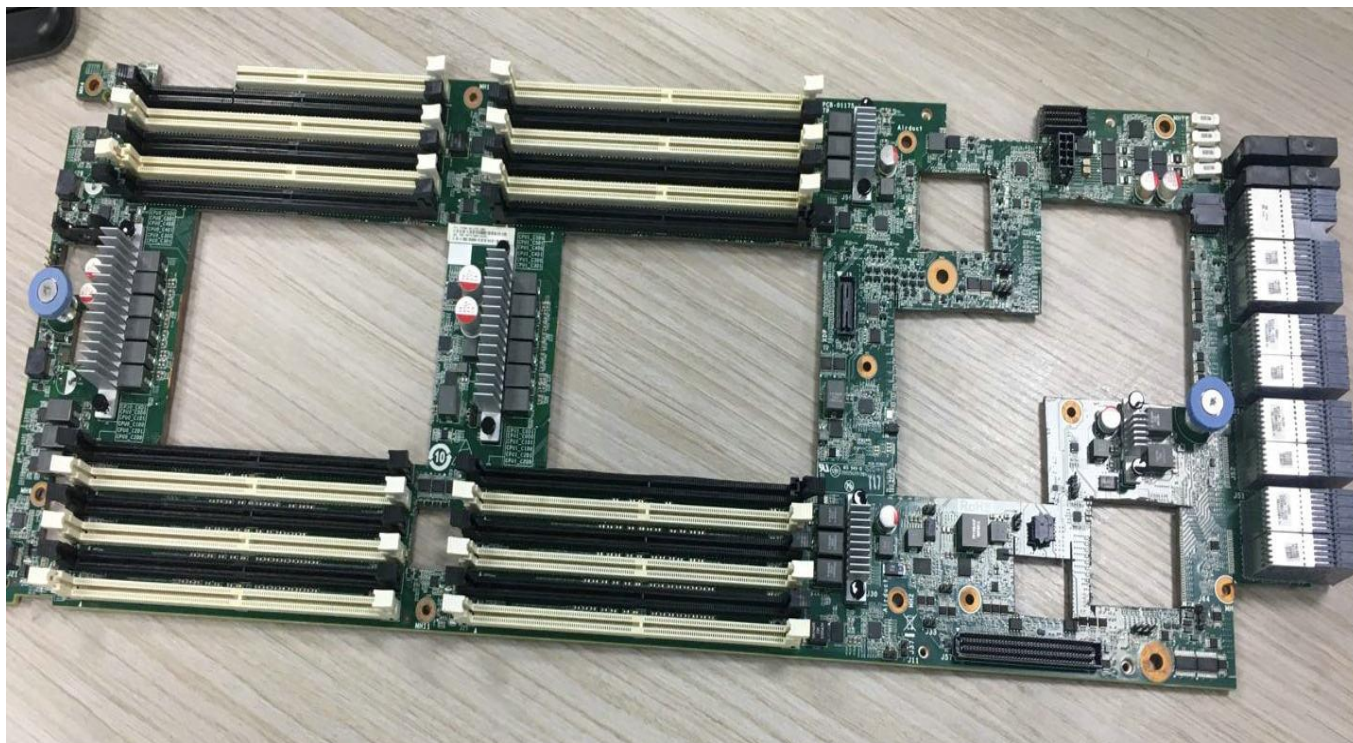
1. Customer: MITAC Computer CORP.



2. Cleaning and Inspection Tool: cleaner, DI water machine, Kyzen 4625B Cleaning liquid, phone, 200 times electronic magnifier.



3. Cleaning sample: main board (A B side)



4. Condition setting:

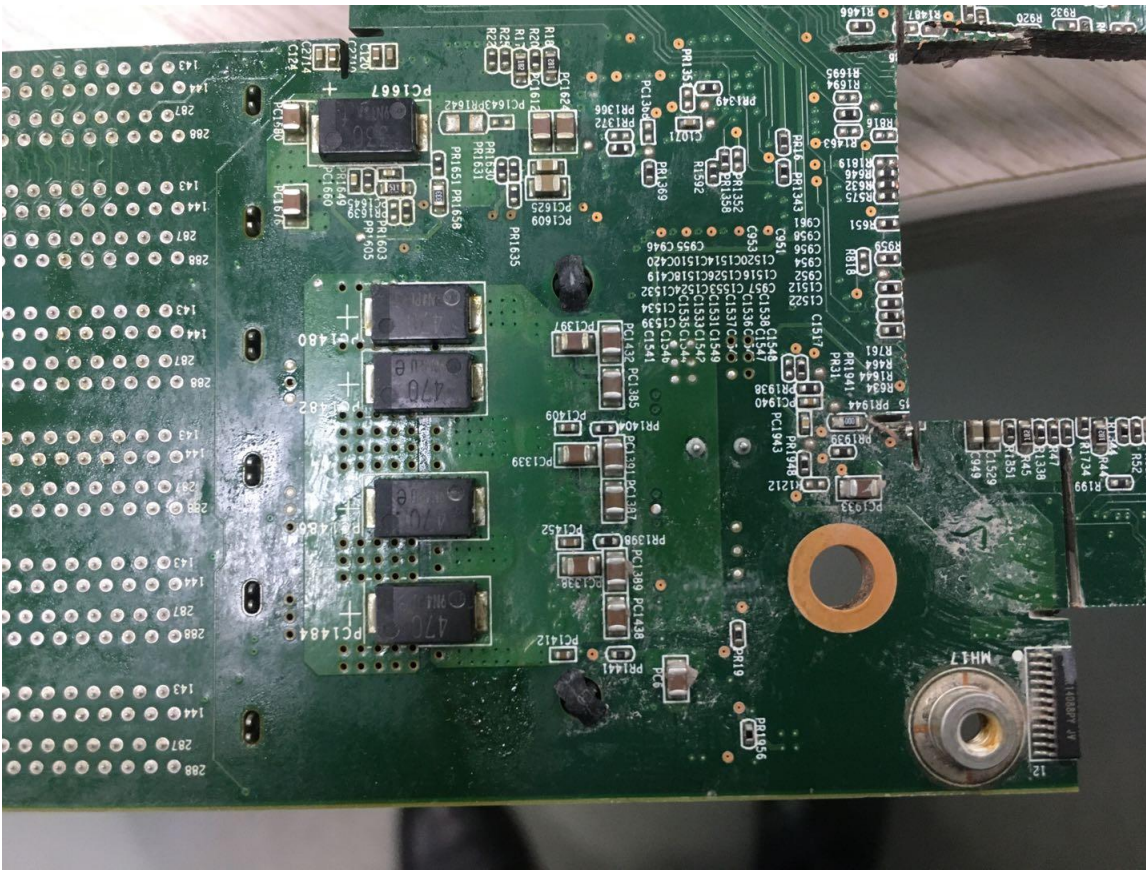
Machine	I.C.T-5600
---------	------------

Cleaning liquid	Kyzen 4625B
Clean time	10-20min
Rinse times	3-5times
Rinse time	1-3min/times
Dry time	15-30min
Cleaning fluid concentration	25%
Cleaning fluid temperature	RT-75°C
DI water resistivity	6MΩ
Dry temperature	RT-99°C



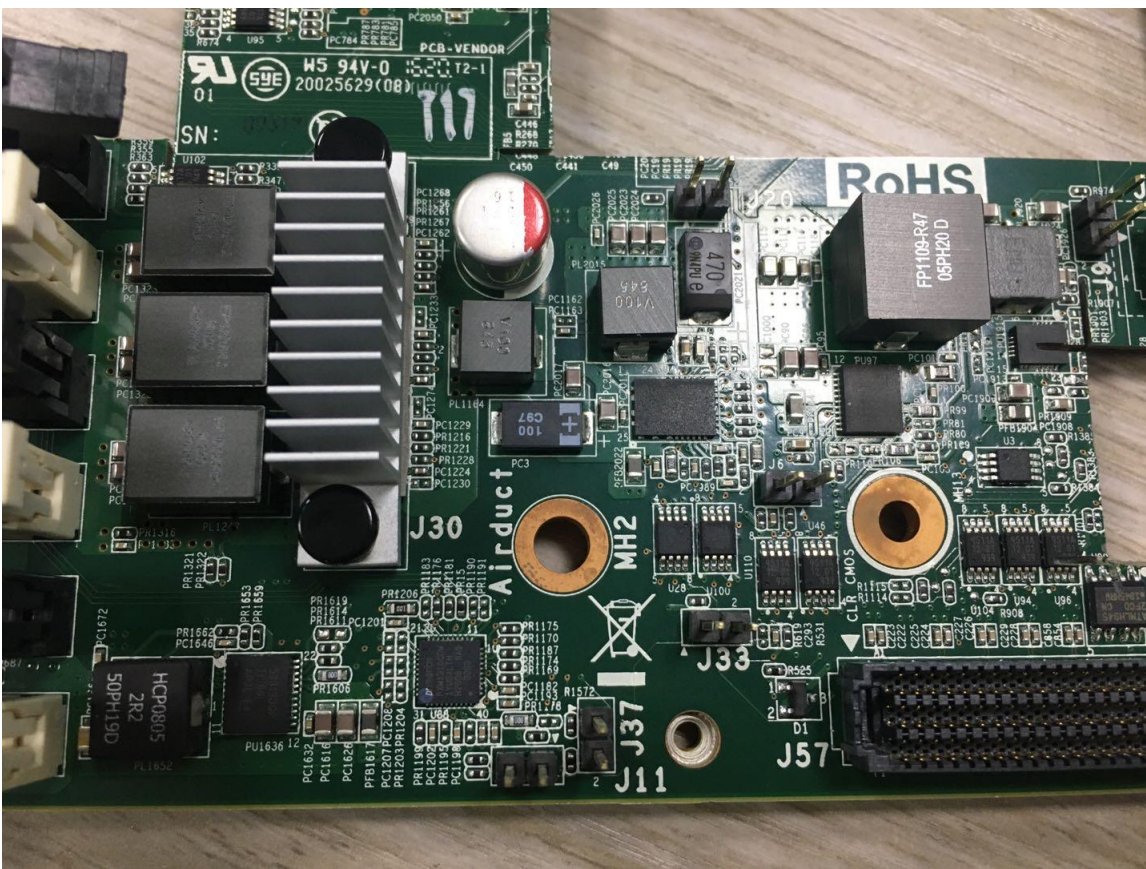
5. Effect comparison:

Comparison of 9 cleaning methods for different parts and different areas:

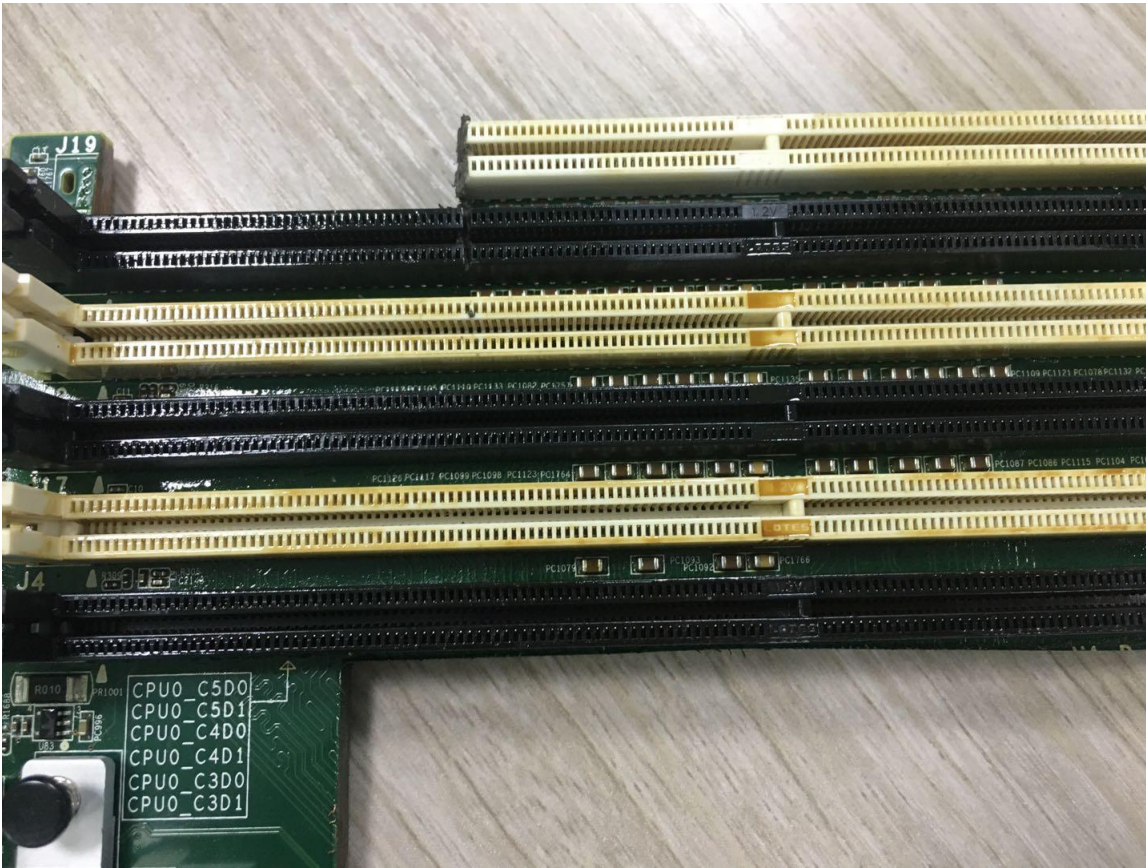


Comparison 1

Before cleaning



After cleaning

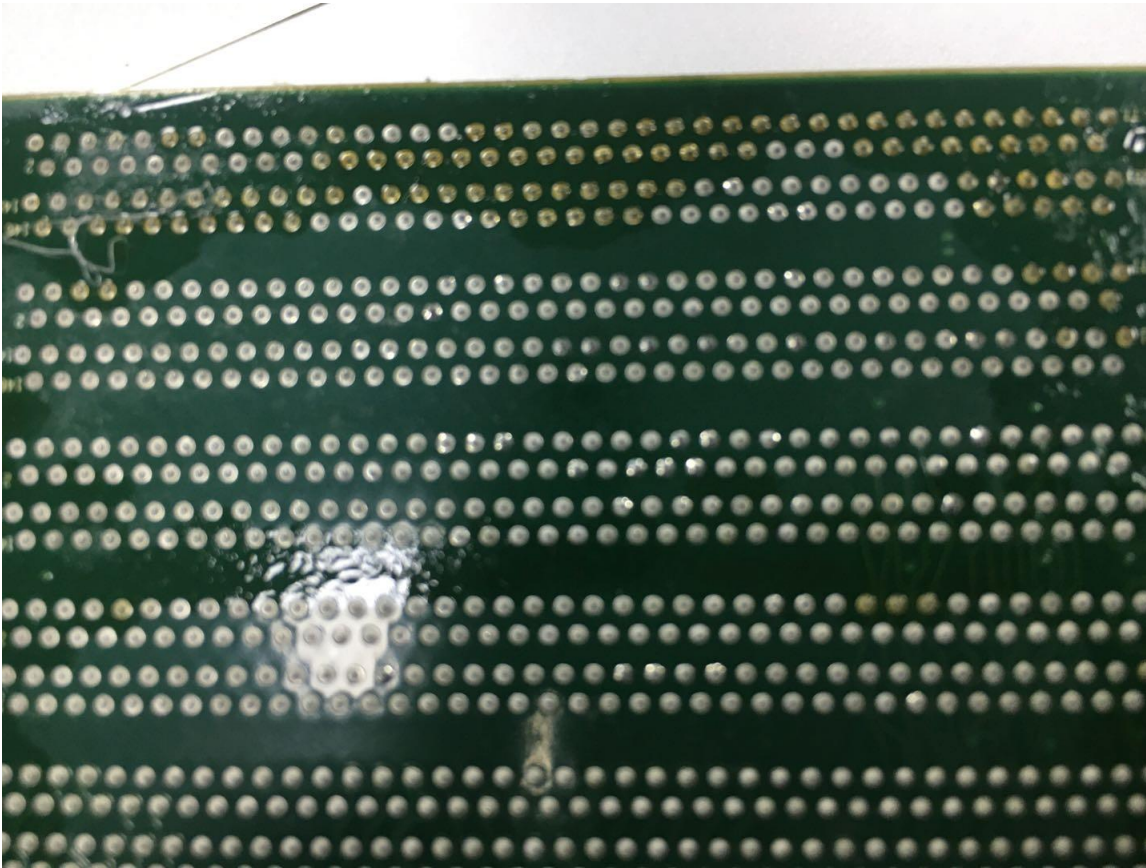


Comparison 2

Before cleaning

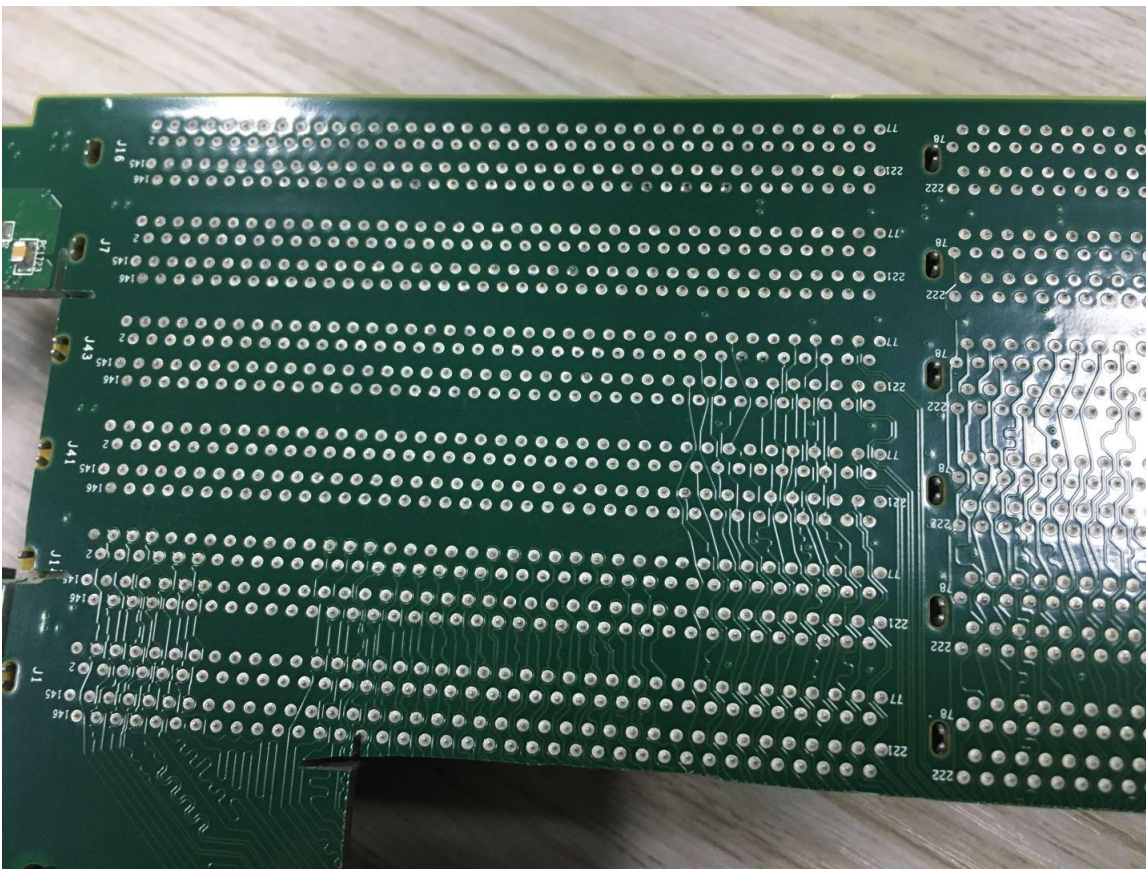


After cleaning



Comparison 3

Before cleaning

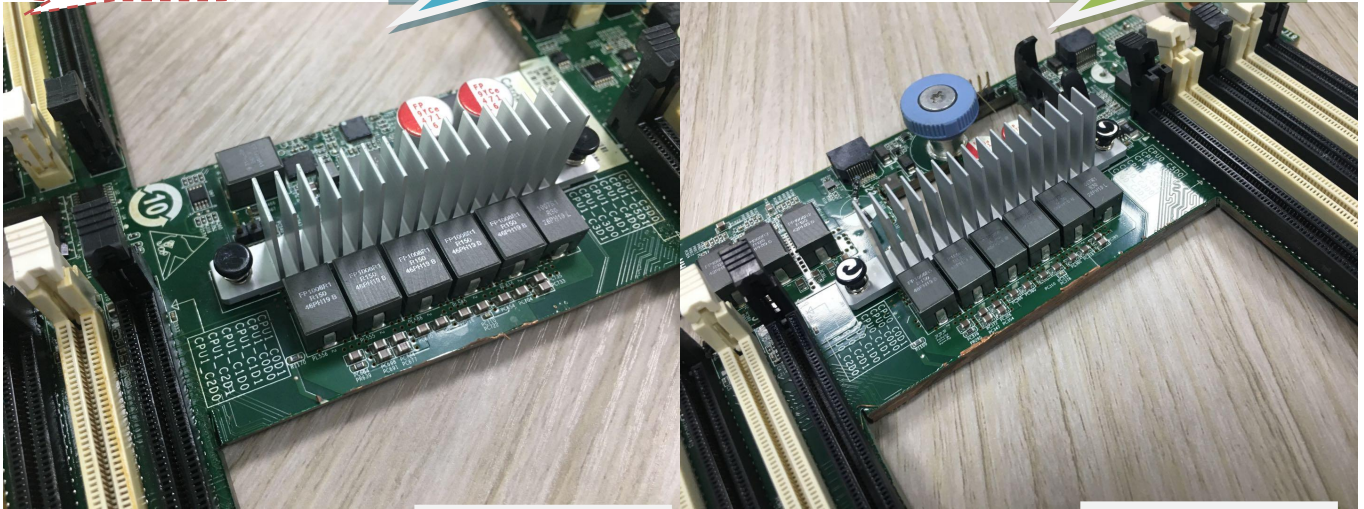


After cleaning

Comparison 4

Before cleaning

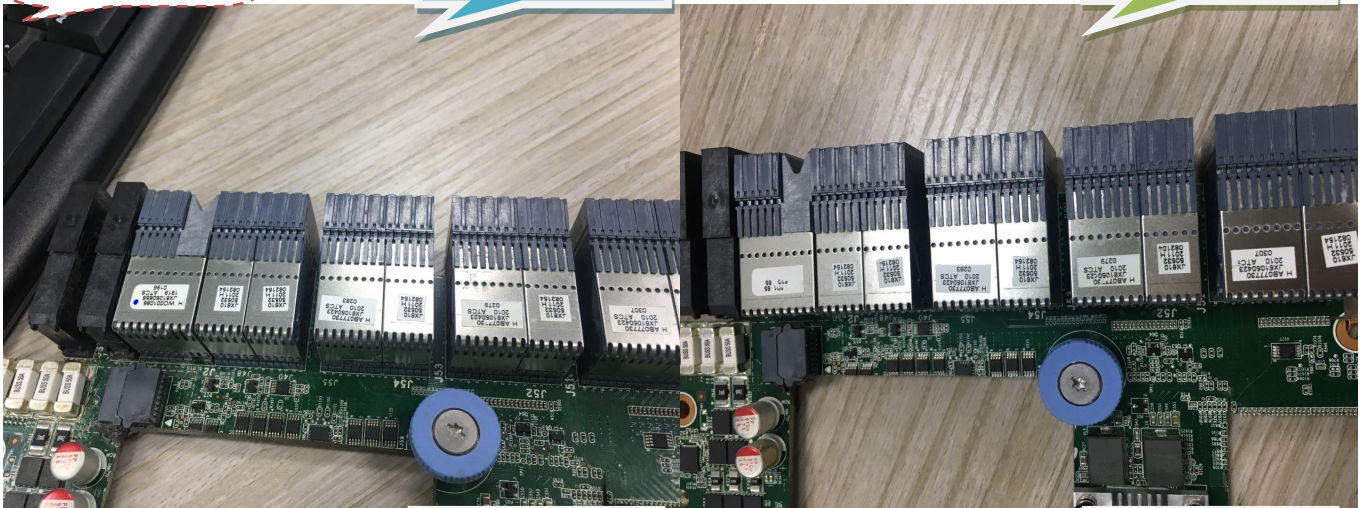
After cleaning



Comparison 5

Before cleaning

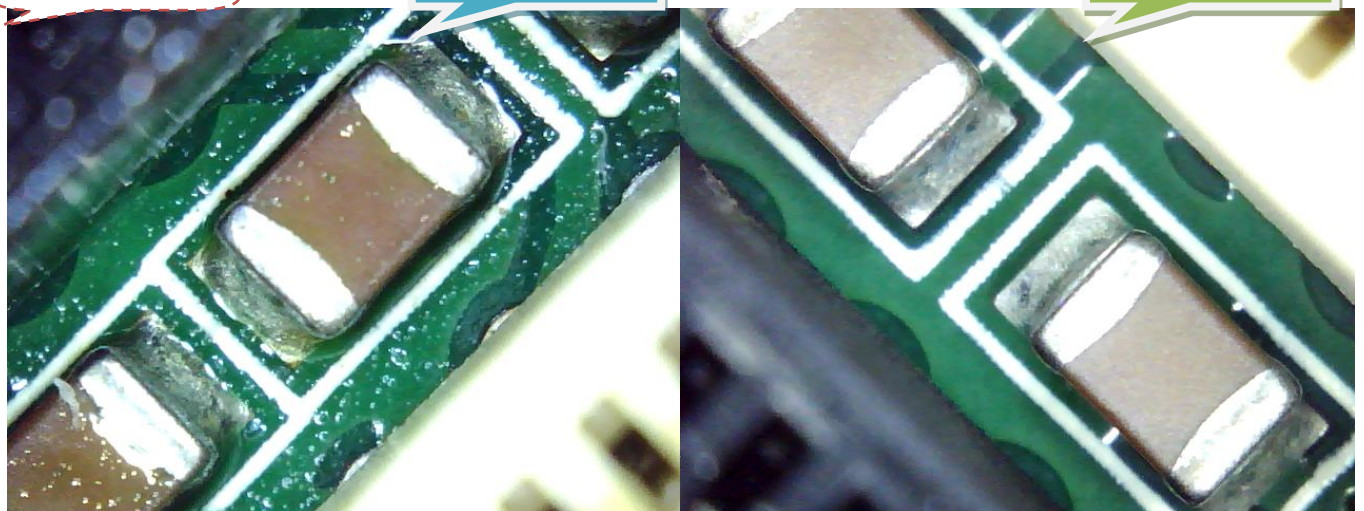
After cleaning

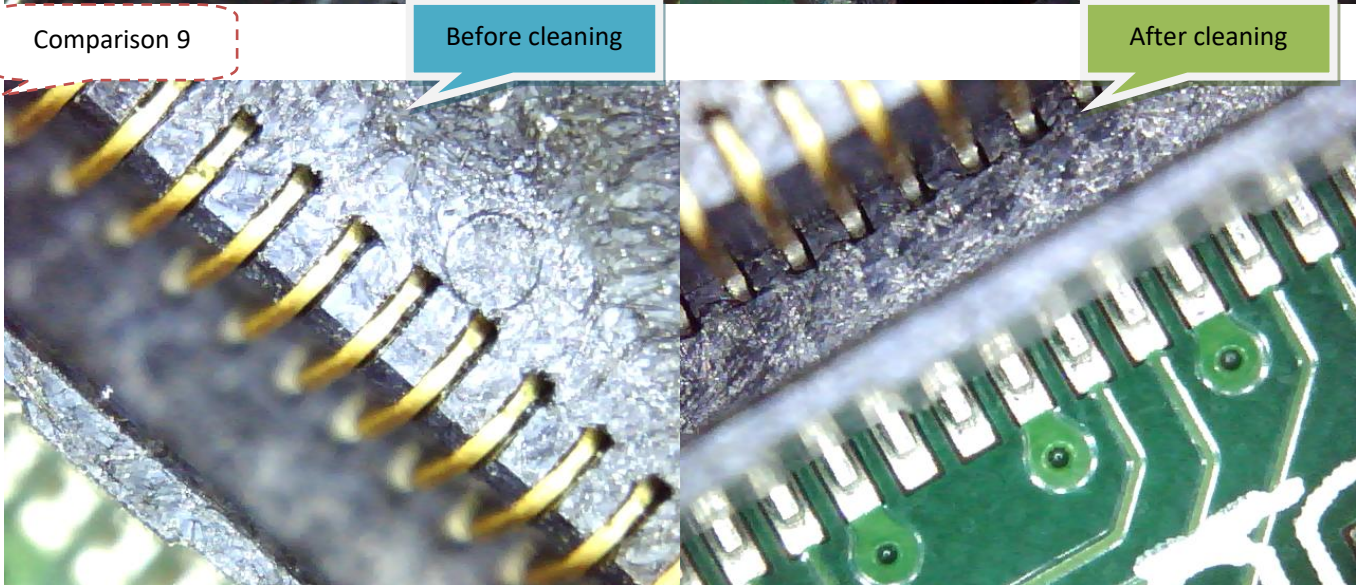
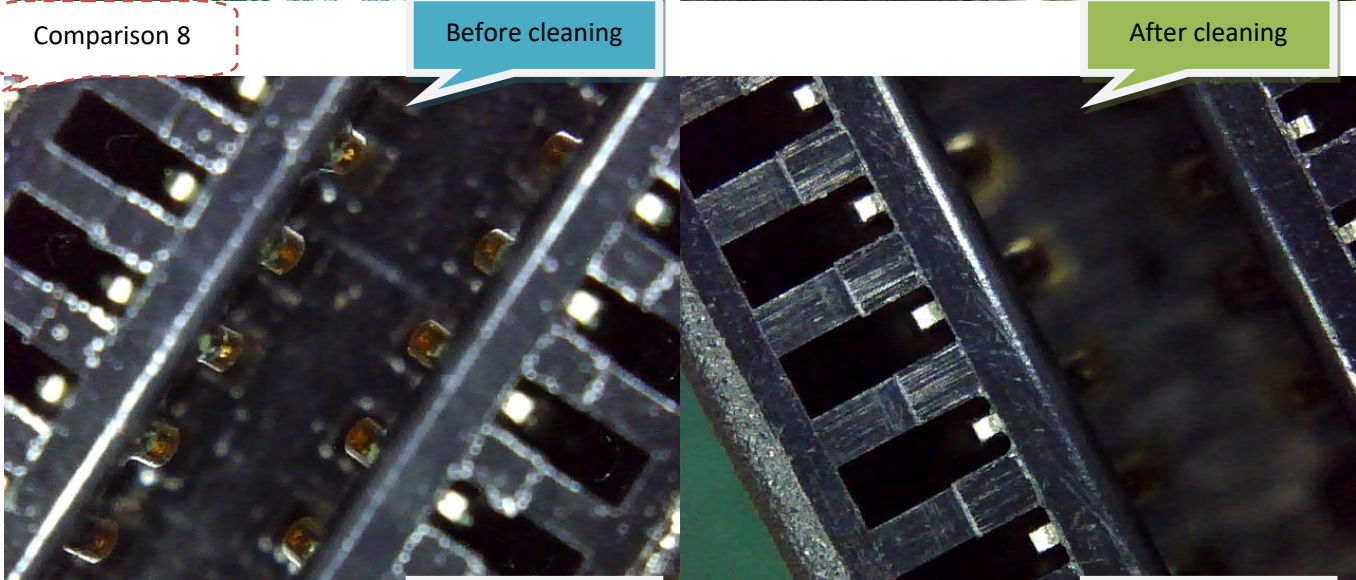


Comparison 6

Before cleaning

After cleaning





6. Conclusion

After this cleaning, using I.C.T-5600 PCBA cleaning machine, DI-250 DI water machine, combined with 4625B water-based environmental protection cleaning solution, under the above process parameters, good cleaning effect has been achieved, and no damage to PCBA components, which can ensure the effectiveness and safety of sample cleaning.

Standard Accessories:

No.	Item	Spec.	Quantity
1	Power start key	/	2pcs
2	Door lock key	/	2pcs
3	Air tube	∅10mm	1pcs
4	Filter cartridge	10 inches, 0.45μm	2pcs
5	Wash basket	610*560*100mm	1pcs
6	Universal fixture	/	2pcs

Specification:

Item	I.C.T-5600	I.C.T-5600L
Cleaning basket size	L610*W560*H100(mm)*2 layers	L700*W700*H150(mm)*2 layers
Spray tank capacity	18L	
Concentrate capacity	30L	
Diluent tank capacity	60L	
Clean time	0~99min	
Rinse time	0~10min/times	
Rinse times	1~59times	
Hot air dry time	0~60min	
Detergent heat temp	Room temp~75℃	
PCB hot air dry temp	Room temp~99℃	
Resistivity range	0~18MΩ	
Detergent filter	0.22um	1um
Rinse water pipe out filter	0.22um	1um
Air filter	10um	
DI water supply	30~65L/Min	
DI water pressure	0.2~0.4Mpa	
Vent size	∅100*H30(mm)	
Power/Air supply	AC380V/3 Phase/50HZ, 30KW, /0.5~0.7Mpa	
Air pressure	4.5~6Kg/cm ² , 200~400L/Min	
Dimension	L1300*W1200*H1850mm	L1400*W1400*H1960mm
Weight	600KG	700KG

* I.C.T keeps working on quality and performance, specifications and appearance may be updated without particular notice.

Thanks for choosing I.C.T.

I.C.T looks forward to win-win cooperation.

Thank you.