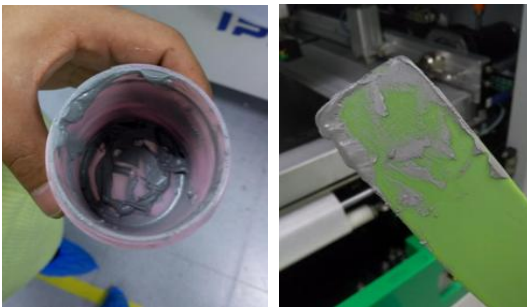


SMT Intelligent Solder Paste Supply System



Reduce waste



Manual addition :
 Bottle bottom residue is generally about 15g
 Mixer residue 3-5g(3 times for one bottle solder paste)
 Minimum waste of solder paste in a bottle:
15g+3*3g=24g



Auto addition :
 Bottle bottom residue:
33.6g-30.8g=2.8g



Reduce time

Operation Addition

- Increasing Production Capacity: Bottle change for 30 seconds, the whole line does not stop, capacity is not wasted

Program Control

- Stable and Reliable: With Inclusion, Add Alarm

Uniform addition

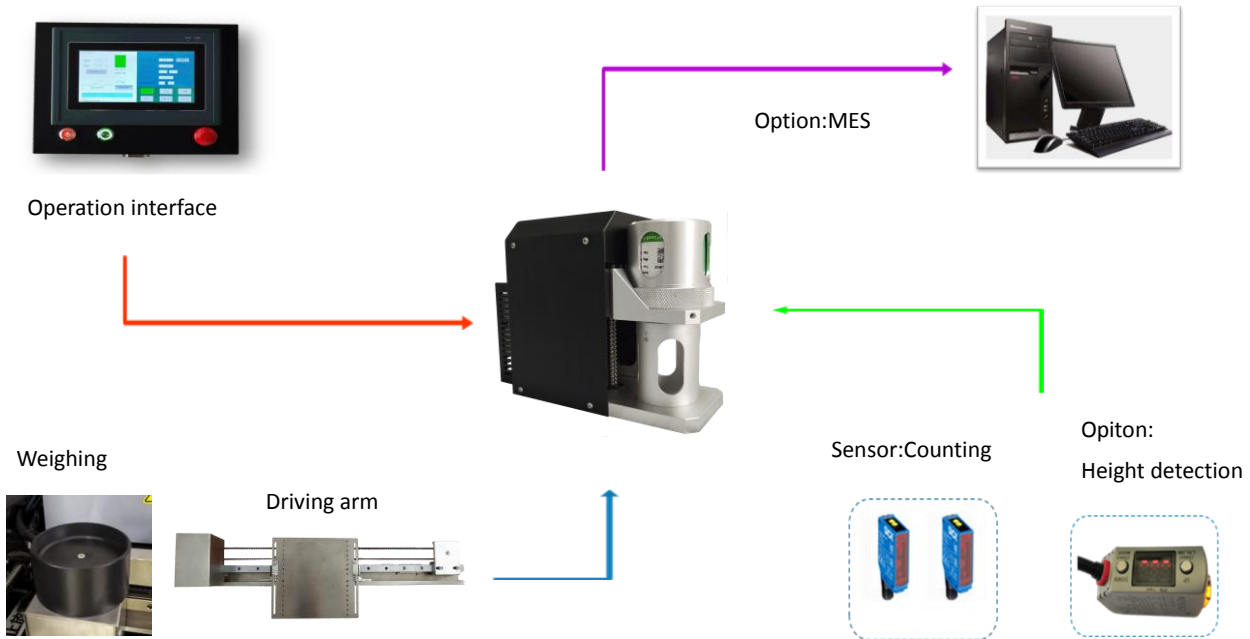
- stable solder content:The output of solder paste is stable and controllable, and the frequency of adding solder can be set.

Closing Operation

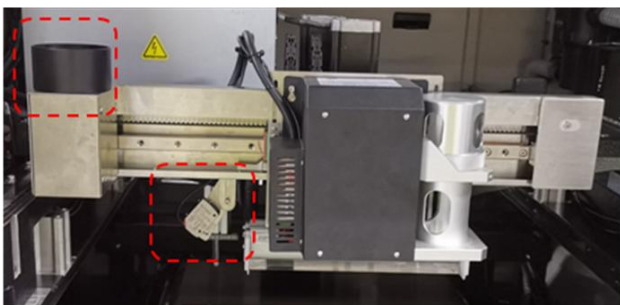
- Temperature and Humidity Controllable,With temperature and humidity monitoring, real-time alarm of temperature and humidity in printing.

Introduce:

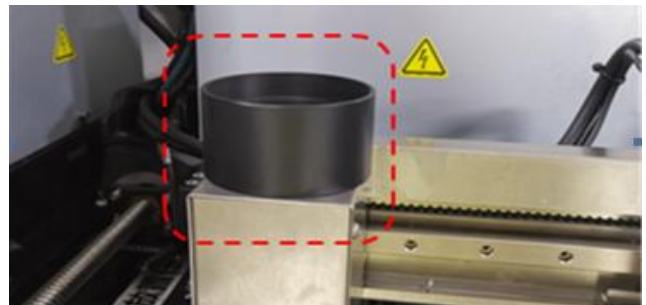
- 1, Drive mode: pure electric, automatic control
- 2, Trigger Mode: Upper and Lower Sensor Trigger, or Highly Monitored Induction Trigger
- 3, Control mode: touch screen control, programmable control
- 4, Operation mode: automatic operation, left-right movement, fixed-point solder addition
- 5, Minimum solder output: 2g
- 6, Solder paste extraction accuracy: 2g (+0.2g) (measurement error less than 10%)
- 7, Bottle bottom residue: 3-5g (about 3g measured residue)
- 8, Risk Assessment: No solder dropping
- 9, Application: Mainstream printer of all brands can be used (DEK, MPM, PANASONIC, FUJI, IPM, ESE, I.C.T)



Features:

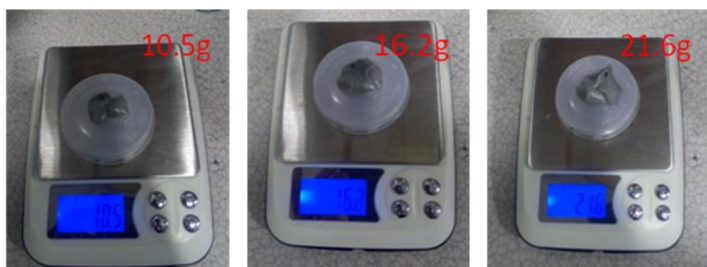


Using pressure induction weighing module
 Analog-to-Digital Converter
 Direct access to weight data
 Half a bottle of solder paste of any weight can be handled
 Elimination of false alarm and high reliability



KEYENCE Height Monitoring Sensor (Option)
 High accuracy: 0.2mm sensitivity
 Monitorable height of solder paste and automatic addition
 After opening, when there are many kinds of products, solder can be added automatically without switching program.

Actual effect :



Accuracy test

Setting 0.5mm down pressure and 5.5g output

Data calculation:

$$21.6 - 16.2 = 5.4G \quad 16.2 - 10.5 = 5.7g$$



5.4 / 5.7 The data of both groups were within 5.5±0.3g.

The actual error is less than the nominal (±10%) and can reach (±7%) with high accuracy.

Specification:

Drive Mode	Electric
Control Method	Programmable Control
Minimum Solder Output	2g
Bottle Bottom Residue	3-5g
MES System	Option
Power Supply	AC:220±10%,50/60HZ,100w
Dimension(mm)	Customized
Weight	Customized

Customers:

Thanks for choosing I.C.T.
I.C.T looks forward to win-win cooperation.